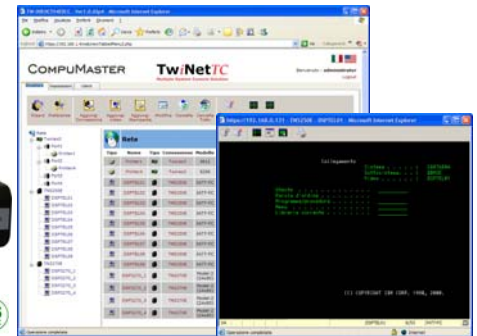


The most Simple and Secure way to remotely Access ANY member of the IBM System i Family.

TwNetTC provides secure remote access from a TCP/IP network to any IBM i5, iSeries, AS/400, S/36 or Twinax Remote control unit.



TwNetTC represents the next generation of the CompuMaster TwiNet product.

TwNetTC is an highly reliable embedded device that act as a HTTPS/SSL Secure Gateway to any IBM iSeries AS/400, S/36, or Advanced S/36.

The TwiNetTC applications:

◆ **Secure Web access portal to AS/400 applications.**

Because TwiNetTC uses SSL/HTTPS, it is possible to access AS/400 display sessions remotely without a security risk.

Connections to host can be either Twinax with SNA protocol or Ethernet TCP/IP with Telnet 5250E , Telnet 3270E or both types.

◆ **Browser or local client access.**

With TwiNetTC display emulation sessions can be accessed either via a browser using an ActiveX control, or via a dedicated client application installed on a PC. With either method the session is secure via SSH/HTTPS.

◆ **TCP/IP access to system consoles including LPAR (Logical PARTitioning) configured systems requiring multiple consoles.**

The system console is typically a Twinax terminal connected to port 0, address 0 and is the only terminal from which it is possible to perform certain system administration activities.

TwNetTC allows use of the system console from any remote PC connected via LAN, WAN, VPN with SSL and HTTPS security. The TwiNetTC4 model handles up to 4 consoles simultaneously.

◆ **Access to display and printer sessions from any PC connected on the network to IBM AS/400, S/36, or Advanced S/36 Twinax control units (52xx, 53xx, 54xx).**

Existing IBM systems with only Twinax support are limited in that the Twinax devices traditionally are not accessible over an existing TCP/IP network infrastructure.

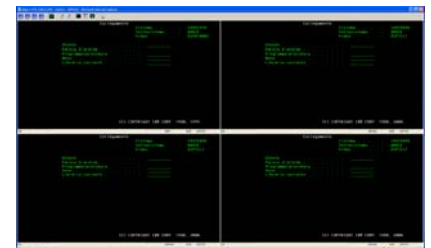
TwNetTC allows integration of legacy systems on TCP/IP networks by making these devices accessible to PCs the network. Display and printer sessions can now be easily accessed over the TCP/IP network. With the TwiNetTC4 up to 28 Twinax device sessions can be accessed.

◆ **PDF printer session.**

The TN5250E printer session produce PDF printouts that are directly displayed to the associated user.

◆ **MDI Display Sessions**

With TwiNetTC it is possible to display multiple display sessions in a single window as shown to the right.

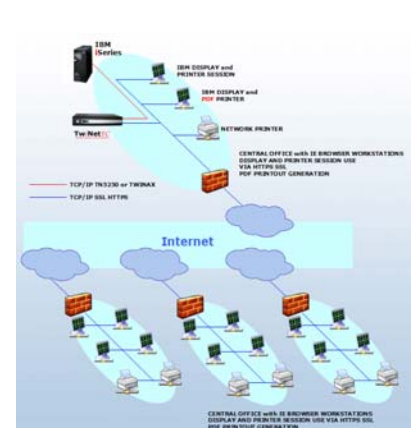


◆ **Safe session mode**

TwNetTC keeps the Twinax connection active even if there is an interruption in the TCP/IP network traffic to the TwiNetTC. This assures that when a display session is reconnected, the session is exactly as it was when the disconnect occurred.

Example of a typical TwiNetTC application.

TwNetTC can be connected to the IBM iSeries system via Ethernet, via Twinax or both. It allows you to access the IBM display and printer sessions using HTTPS SSL from any IE browser, either it is a local or remote workstation.



TECHNICAL SPECIFICATION	TwinNet TC	TwinNet TC4	TwinNet TC100
Processor	VIA C7 LP V4 - 1.3GHz	VIA C7 LP V4 - 1.3GHz	VIA C7 LP V4 - 1.3GHz
Operating System	Windows XP Embedded	Windows XP Embedded	Windows XP Embedded
RAM Memory	256MB	256MB	512MB
Flash Memory	512MB	512MB	512MB
External Power Supply 100/240VAC 50/60Hz, 12V 4A DC	•	•	•
Dimensions H x W x D	292 x 53 x 237 mm	292 x 53 x 237 mm	292 x 53 x 237 mm
CE, FCC Class B, GS TUV, UL Certifications	•	•	•
Temperature Range (Working Operations)	0° ÷ 40°	0° ÷ 40°	0° ÷ 40°
Humidity	0% ÷ 90%	0% ÷ 90%	0% ÷ 90%
Peripheral			
Twinax Interface remote unit	1 port (7 addresses)	4 ports (7 x 4 addresses)	-
Connection Twinax Cable	DB15 Female – T Twinax	DB15 Male – 4 Twinax	-
Ethernet RJ45	10/100BaseT	10/100BaseT	10/100BaseT
Monitor DB15 VGA/SVGA	•	•	•
Monitor DVI	•	•	•
Mouse and Keyboard PS/2	•	•	•
2 x RS-232 ports	•	•	•
4 x USB 2.0 ports	•	•	•
Slot PC Card (Cardbus)	•	•	•
Audio In MIC (1 x 1/8 inch jack)	•	•	•
Audio Out Headphones (1 x 1/8 inch jack)	•	•	•
DB25 parallel ports	•	•	•
Client Systems supported			
Client PC	Windows 98/XP, 2000/2003	Windows 98/XP, 2000/2003	Windows 98/XP, 2000/2003
Thin Client CompuMaster	XP series	XP series	XP series
Browser	IE 6.0	IE 6.0	IE 6.0
Host Systems supported			
AS/400 iSeries	from V3R2 to V5R4	from V3R2 to V5R4	from V3R7 to V5R4
Advanced Series/S36	All models	All models	-
System/36	All models	All models	-
Remote control units	52xx, 53xx, 54xx	52xx, 53xx, 54xx	-
Protocols and clients			
SNA 5250	•	•	-
TN5250E / TN3270E	8 sessions	32 sessions	100 sessions
5250 ActiveX (SSL) emulator	Display	Display	Display
TwinNet Gold (SSL) client emulator	Display and Printer	Display and Printer	-
TN5250E printer emulator	-	PDF	PDF
Print2000 Secure Gateway advanced printer support	-	•	•
HTTPS	•	•	•
SSH (remote access)	•	•	•
TwinNet Gold emulator specifications			
Supported operating systems	95/98/NT/ME/XP/2000/2003		-
Supported display emulations	IBM 5251, 5291, 3196, 3180-2, 3477-FG, 3477-FC, 3278x		-
Supported printer emulations	IBM 5256, 5224, 5225, 4214, 4234, 5219-D, 3812, 3287		-
Euro symbol support	•	•	-
Macro, hotspot, programmable keyboard	•	•	-
Editing keyboard profile and video attributes	•	•	-
Cursor shape and selectable/modifiable fonts	•	•	-
Cut and Paste function Record/Playback	•	•	-
C.O.R. support, quality override, Hex Pass Through	•	•	-
GDI printer Driver and text mode	•	•	-
CPI, LPI, quality LQ and NLQ override support	•	•	-
Administration			
Via HTTPS browser	•	•	•
CompuMaster ThinMan 5.0 support	•	•	•
Remote update via Browser	•	•	•
Warranty			
1 year ex-factory. Free period extension of 2 year upon product registration on CompuMaster web site			

Description	Part No.	Twin Data Corporation
TwinNetTC SNA Gateway 1 port TW 7 addresses	CMTWINETTC	1025 Commerce Ave. Union, NJ 07083 USA Tel: 1-908-688-8100 Web: www.twindata.com e-mail: info@twindata.com
TwinNetTC4 SNA Gateway 4 ports TW 28 addresses	CMTWINETTC4	
TwinNetTC100 SNA Gateway 100 TN5250 session	CMTWINETTC100	