

## Overview

CrossRun is an enhanced RDP based Terminal Server Product which delivers Windows desktops and applications to networked clients. Installation is simple and can be completed in minutes with five easy steps. In addition to the standard RDP features, CrossRun provides application publishing, seamless windows, load balancing and more.

CrossRun comes standard on BOSaNOVA's Linux and CE.Net Thin Clients at no additional charge.

## Published Applications

From a central console applications can be easily published to all Thin Clients.

## SSH Connection Security

Sessions to the Terminal Server can be "tunneled" through an SSH connection to provide maximum security. Normally a firewall to the VPN is used to provide the SSH channel.

## Seamless windows

Published applications from the Terminal Server can be run in their own window just like any other application native to the PC or Thin Client.

## Centralized Control

From a central management console it is possible to shadow and/or remote control attached Thin Clients.

## Maximized visualization

Applications can be run maximized or in a fixed size window on the client, allowing the local task bar to remain visible.

## Load balancing

Load balancing is provided to distribute the processing load for published applications on up to 32 servers.



The CrossRun Server Configuration Wizard walks you through installation in minutes with five easy steps.

## Quick and easy setup

### Setup CrossRun in minutes with five easy steps.

The CrossRun client software can be automatically installed from the CrossRun Server. Simply point the client browser to the IP address and port number of the CrossRun Server and the client software will automatically be installed and configured.

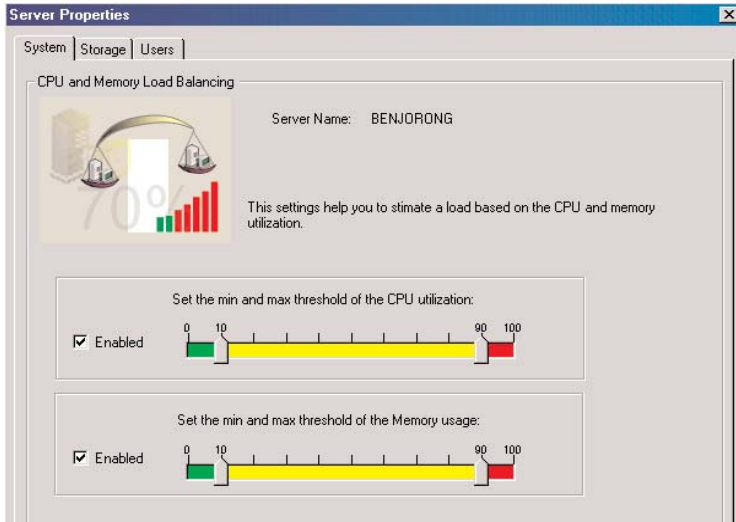
## Management Console

The management console allows visualization of the configured applications in a graphical and intuitive way.

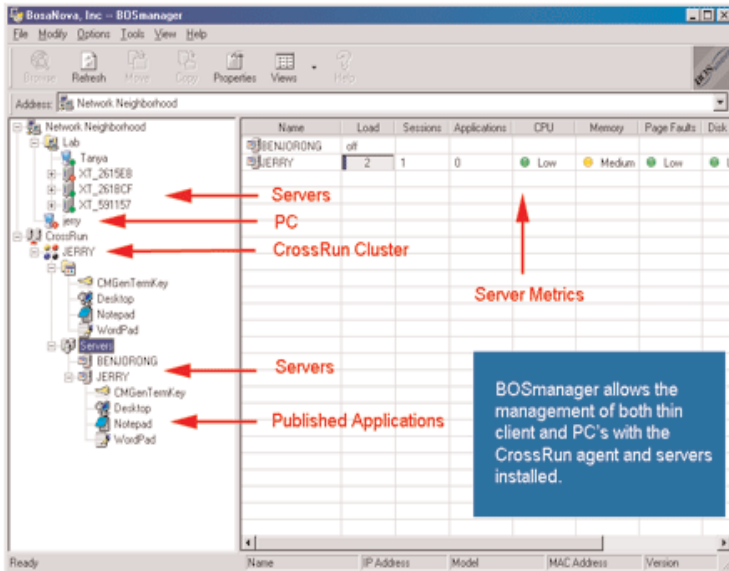
Published applications appear as a hierarchy of icons under each server. Simply right click on a server or published application to change the configured properties.

**BOSaNOVA offers CrossRun for FREE on all of their Linux and CE.Net Thin Clients.**

**BOSaNOVA is the only thin client provider with this exceptional benefit.**



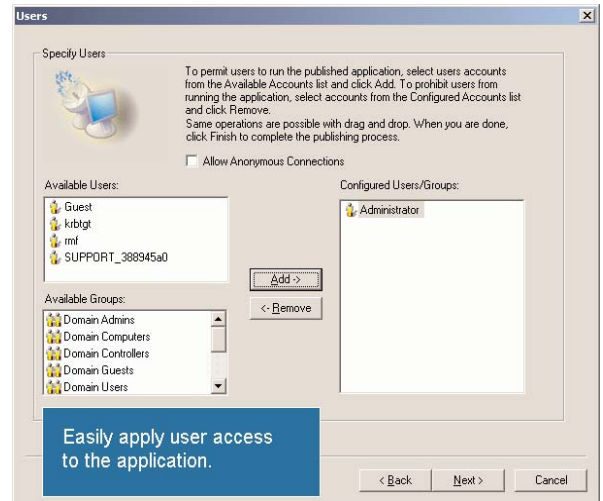
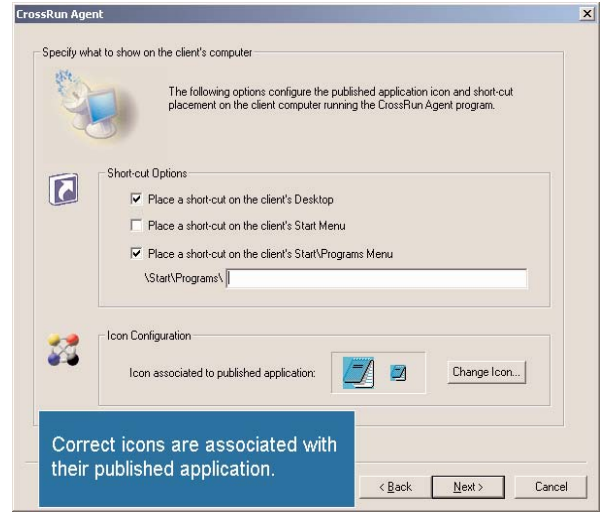
Load balancing feature ensures traffic is distributed efficiently among servers.



BOSmanager allows the management of both thin client and PC's with the CrossRun agent installed.

Authorized Reseller:

**Twin Data Corporation**  
 1025 Commerce Ave.      1.800.597.2525 Toll Free  
 Union, NJ 07083      1.908.688.8100 International  
[www.twindata.com](http://www.twindata.com)



For more information on CrossRun or BOSaNOVA thin clients, contact us at 866-865-5250, email sales@bosanova.net or visit us online at www.bosanova.net.

