

PowerTerm® InterConnect (Linux Edition)

The complete host access solution for Linux Platforms

PowerTerm® InterConnect is Ericom® Software's proven host connectivity solution for organizations requiring fast and accurate access to data residing on the broadest and widest range of hosts on the market today, including IBM, Digital, Unix, SCO, Data General, HP and Tandem. PowerTerm InterConnect is the complete Linux and Unix solution for multiple host information access, working on Linux and major Unix workstations.

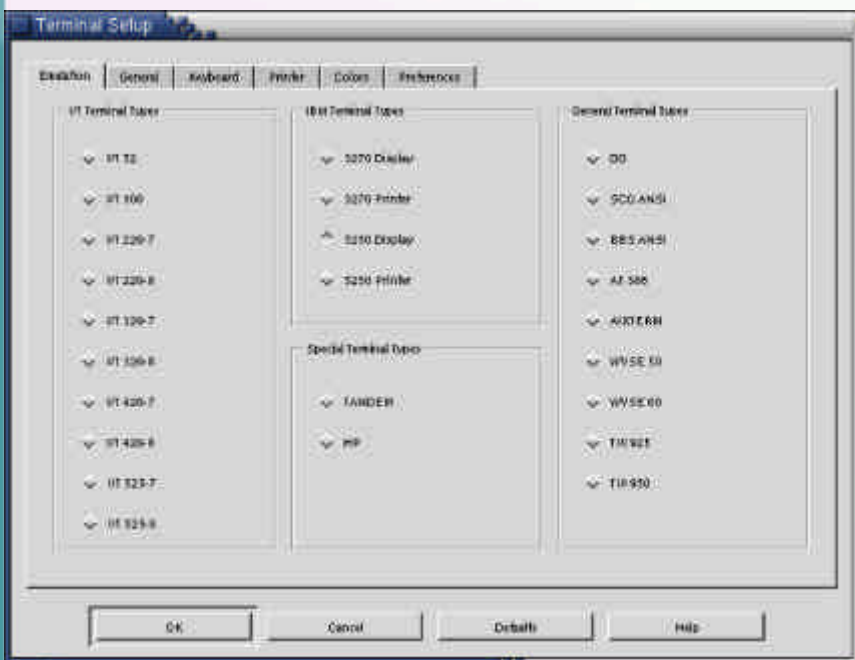
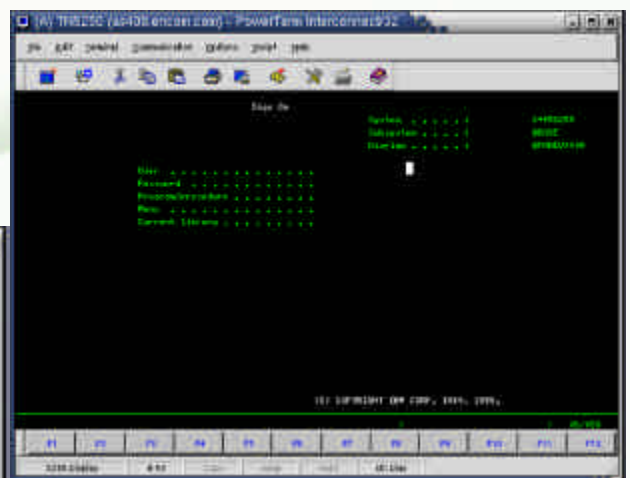
Seamless Connectivity from PC to Host

The PowerTerm InterConnect terminal emulator maximizes enterprise-wide productivity by enabling reliable access to accounting, inventory management, transaction processing and other mission-critical legacy applications. PowerTerm InterConnect provides seamless connectivity to the widest range of machine types and information systems. PowerTerm InterConnect supports a full line of IBM, Digital, Wyse, Data General, SCO, HP, Tandem and other terminal

This full-feature client ensures fast, reliable connections for sharing information throughout the enterprise, regardless of host type.

Simple to Install and Use

This full Linux and Unix terminal emulator is less than 9MB in size and is installed onto any workstation in less than 5 minutes. Once installed, you can start connecting and using it immediately. Its intuitive nature makes it the easiest to use emulator today, helping to minimize training and maintenance.



emulation types. Its powerful and friendly user interface provides a simple, fast and effective means of running legacy applications from within Linux and Unix platforms. PowerTerm InterConnect facilitates connection to applications over network, modem or direct serial links from any workstation.

Maximize Efficiency and Productivity

PowerTerm InterConnect boasts a robust set of state-of-the-art features and fast key response times. Features include customizable function keys, multiple concurrent sessions, menu bar, scalable and selectable fonts, intelligent copy & paste, FTP client, scripting, advanced printing and more.

TECHNICAL SPECIFICATIONS

Platforms Supported – Linux and UNIX

Supported Interfaces – Ethernet Token Ring, Serial Ports, DSL, Modem

Communication Modes – Serial Modem, direct via Port, TCP/IP, Telnet, TN3270, TN5250, PPP/SLIP

Screen Support – Graphical drag & drop keyboard mapping, graphical color selection, customizable function keys, scalable fonts, status line, menu bar and toolbar, 80/132 column width, variable lines per page, double width/height characters, blink and underline attributes, reverse screen support and more

Language Support – English, German, French, Spanish, Italian, Greek, Turkish, Danish, Finnish, Portuguese and more

Other Features – multi-sessions, Power Script Language, script recorder, keep-alive-timeout, keyboard mapping, keyboard property page, language code pages support, automated login, hide menus, print screen, file operations, intelligent copy & paste of blocks/lines/words, status display for host and printer and much more

Ericom and PowerTerm are registered trademarks of Ericom Software in the United States and/or other countries. All other brands and product names mentioned are trademarks of their respective owners.

